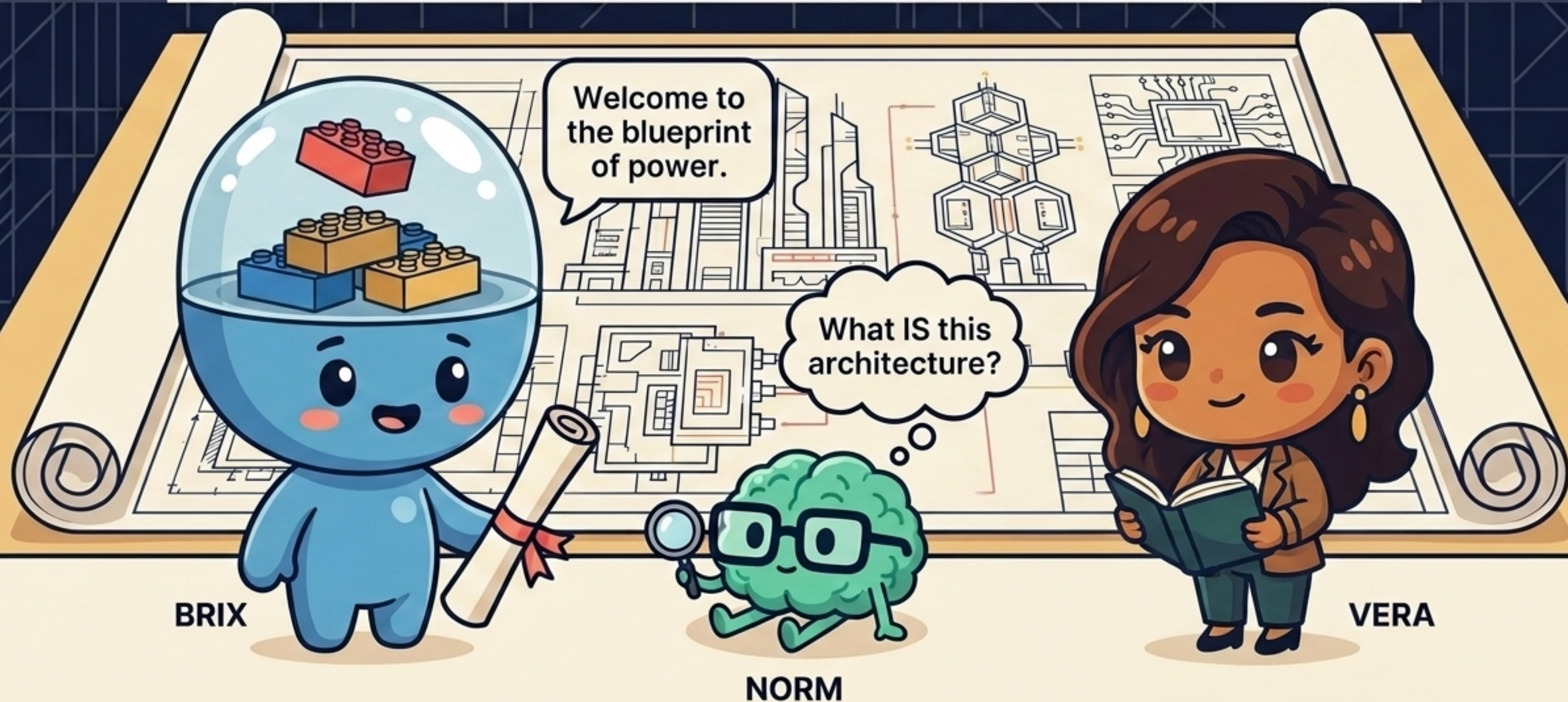


# The Matrix of Extreme Modernity

History is not an accident; it is an architecture.  
To stop the building, we must learn to read the blueprint.

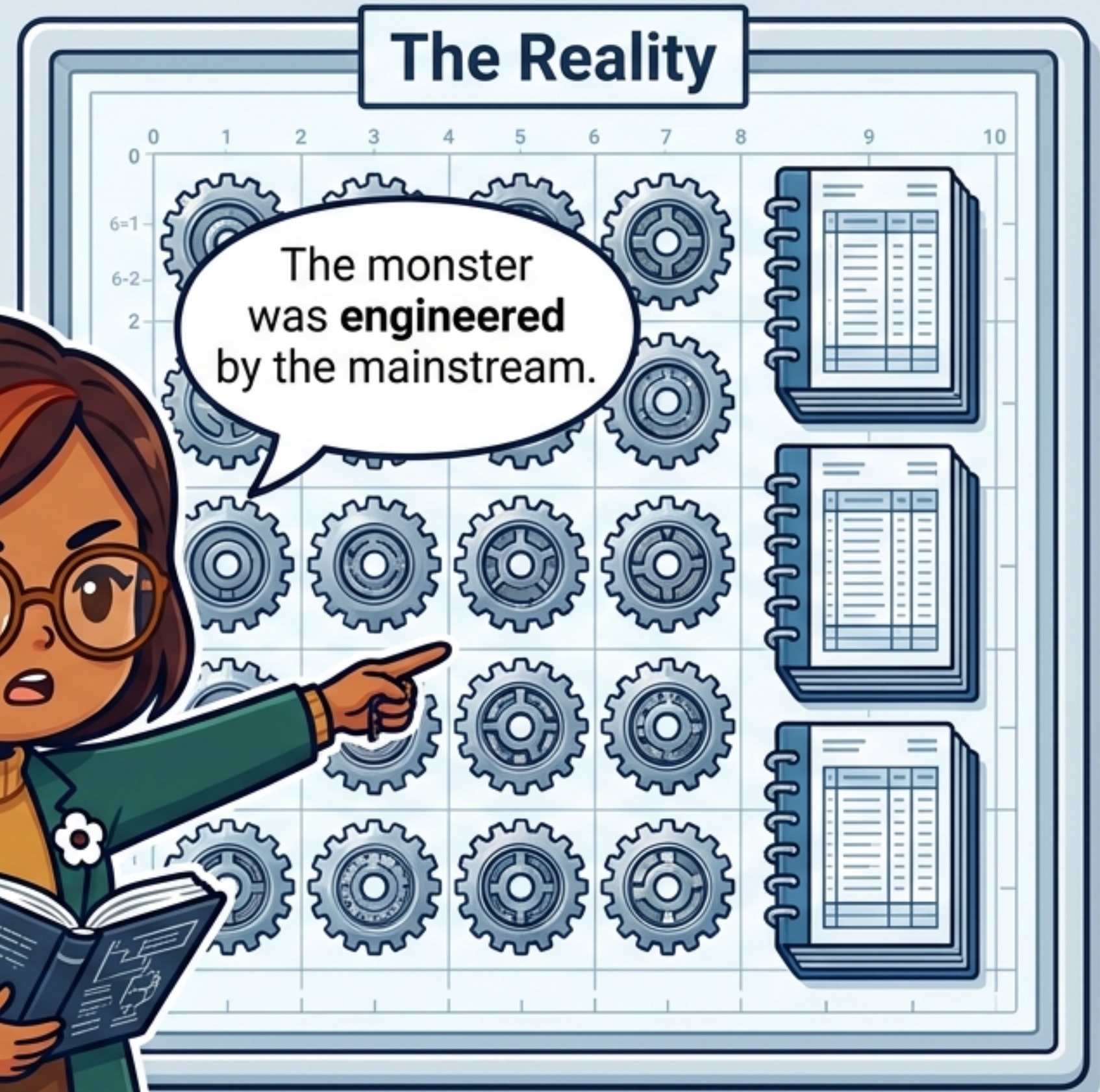


BRIX

NORM

VERA

# The Comforting Fable vs. The Uncomfortable Truth



We are taught that the most murderous regime in history was an **unpredictable aberration**. In **reality**, it grew logically from respectable, mainstream ideas.

# The Industrial Fabrication of National Socialism

From the 4 Main Sources of Modern Management



**Efficiency & Standardization**  
(Taylorism)  
Focus on productivity and measurement.



**Bureaucracy & Control**  
(Weberianism)  
Rules, hierarchy, and documentation.



**Technocracy & Expertise**  
Data-driven, rule by technical experts.



**Propaganda & Mass Communication**  
Shaping opinion, narrative control.

The system of modern management was **weaponized**.

It wasn't chaos, it was a **machine!**

**National Socialism:  
A Manufactured Regime.**

# The Installation of a Regime



Hitler was not voted into power in a landslide. As his democratic support collapsed, panicked conservative elites appointed him to crush the progressive Left.



Installed by elites. Not elected by majorities.

# Echoes in the Matrix: 1930s vs. 2020s

1930s Weimar

2020s Modernity

The technology changes.  
The structure doesn't.

The Elites



WHOA! It's the  
exact same blueprint!

Media  
Magnates

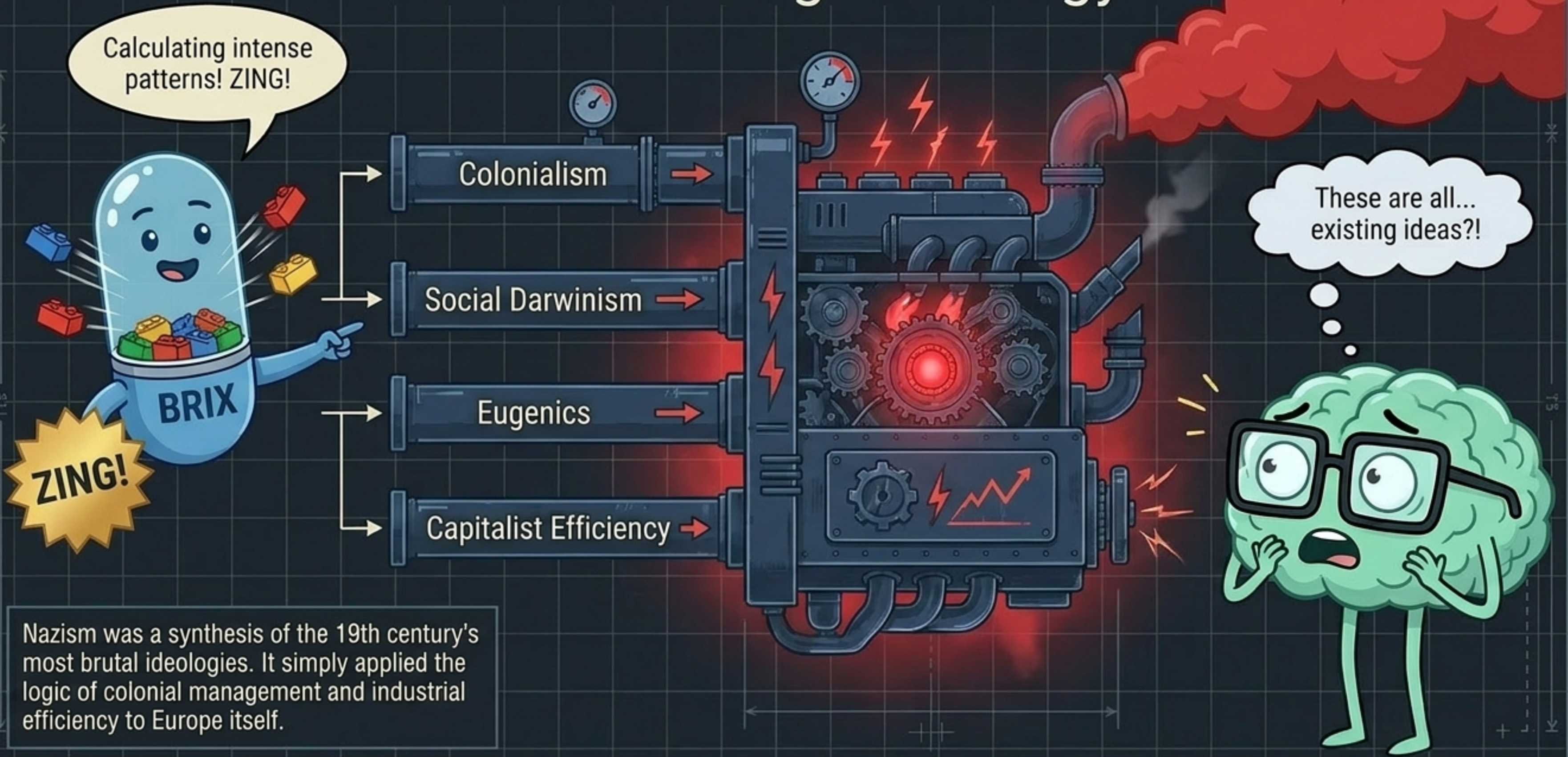


WHOA!

The architecture of the Extreme  
Centre relies on a recurring formula. To  
bypass democracy, elites monopolise  
media and manufacture culture wars.



# Industrialising Pathology



Nazism was a synthesis of the 19th century's most brutal ideologies. It simply applied the logic of colonial management and industrial efficiency to Europe itself.

# The Iceberg of History

The Fable:  
Alien Faction



Spoiler: it didn't  
come from nowhere.



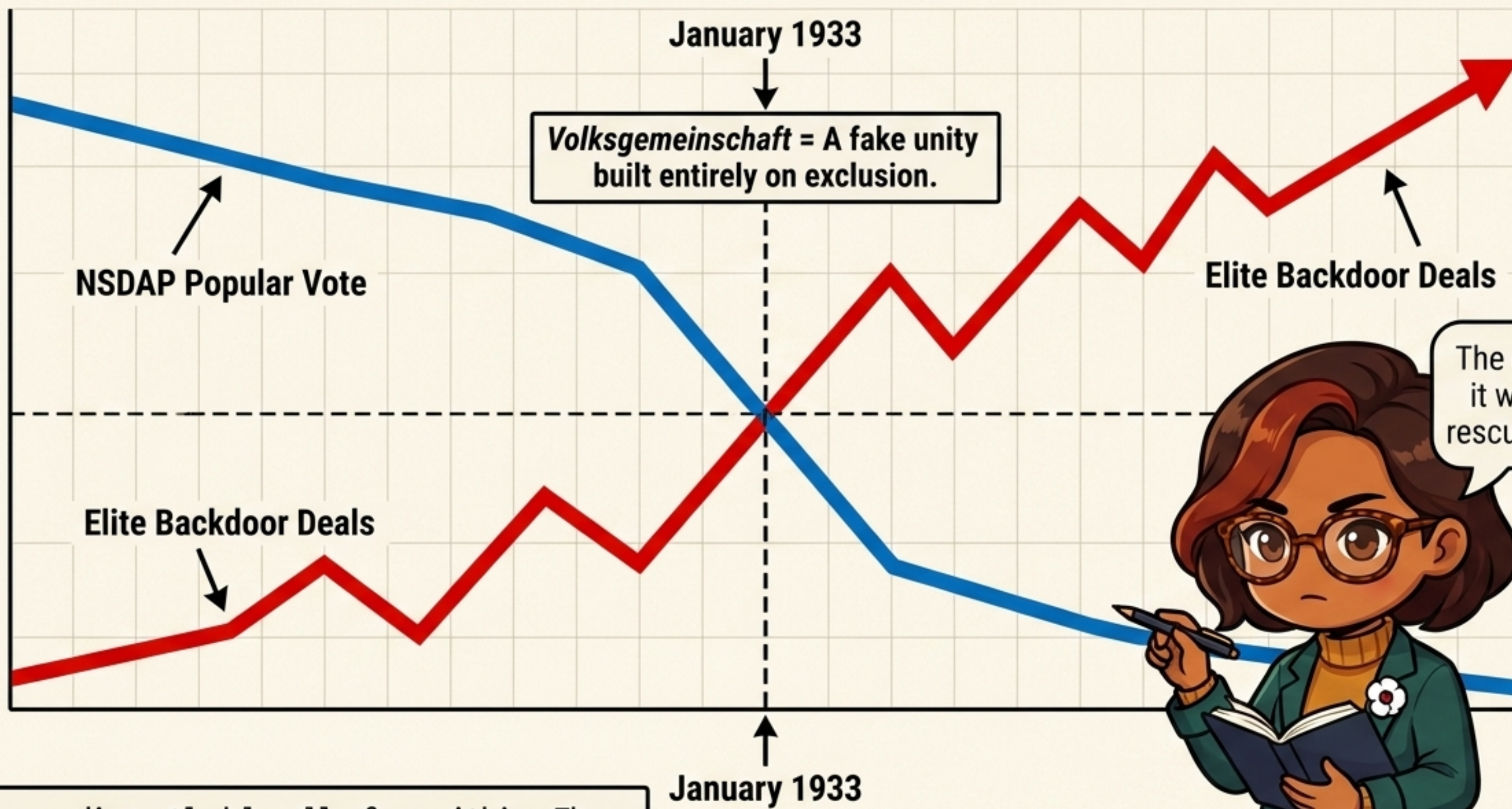
The foundation  
was already built!



The Reality:  
Western Modernity

We focus on the visible event,  
assuming it came from nowhere.  
We ignore the massive, submerged  
foundation of culture that made it possible.

# The Diagnostic Crossing (January 1933)



The data proves it was an elite rescue operation.



VERA

Democracy was dismantled legally from within. The regime compensated for its lack of majority support by fabricating an artificial "people's community."

# The Freedom of the Wolves

Deregulated  
Capital

Neoliberalism =  
Markets run everything;  
society is dismantled.

The Public

VERA

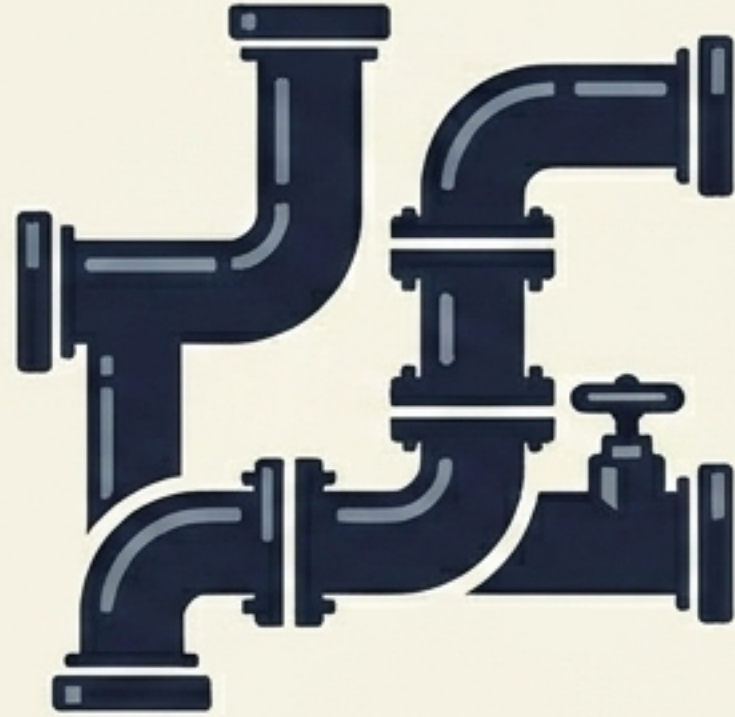
Who actually  
gets to have  
freedom?

The wolves  
are winning...

When we accept TINA ("There Is No Alternative"),  
we surrender to the logic that the freedom of  
monopolies requires the degradation of society.

NORM

# Recap – Decoding the Machine



The **Extreme Centre** is a recurring mechanism. It leverages existing architectures of inequality, bypasses parliament, and allies with extremists parliament, and allies with extremists to protect capital.

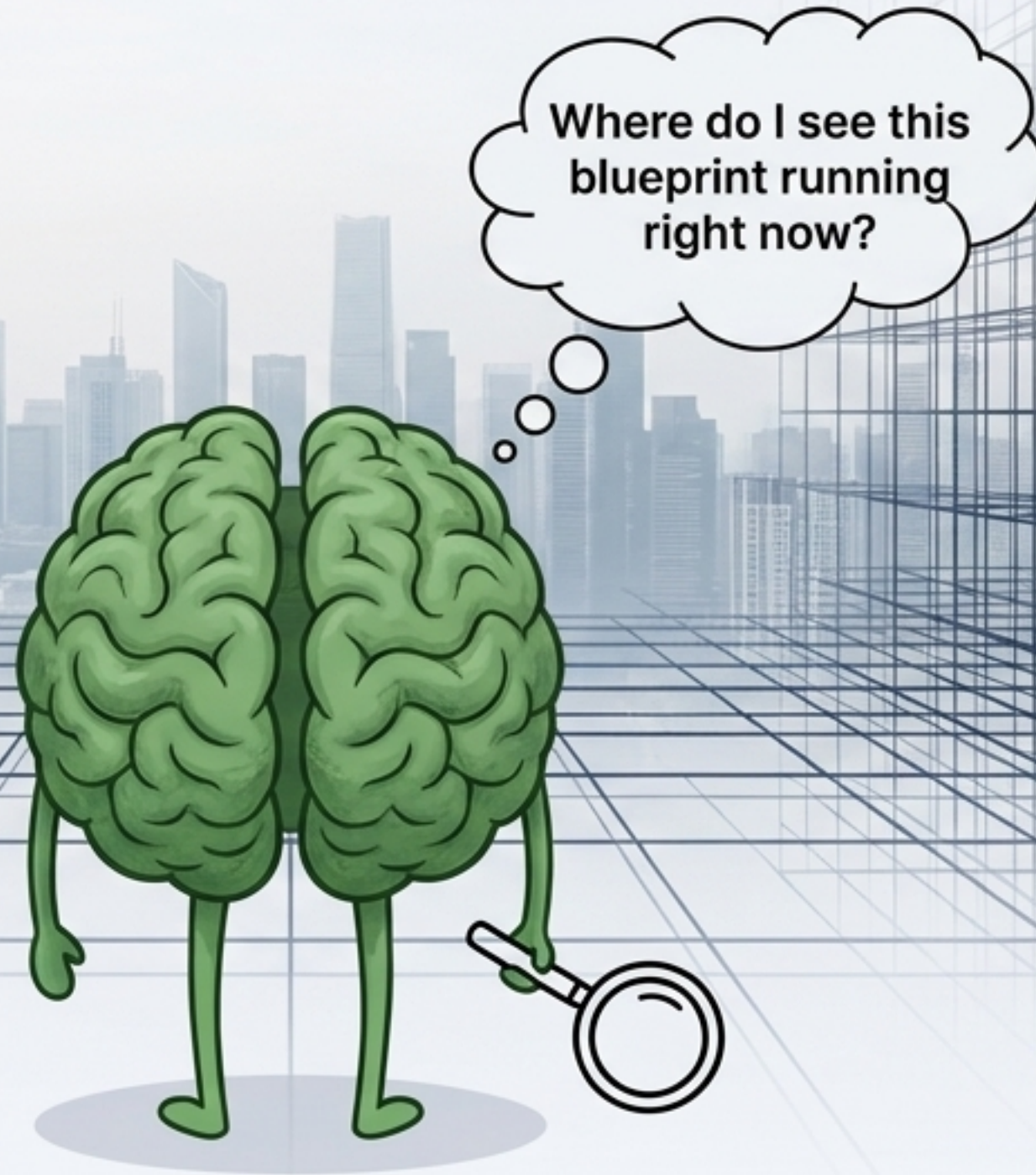


**NORM**



# Where is the Blueprint Today?

**The architecture is never entirely finished. Fascism is a latent feature of our economic system, waiting to be activated.**



# History is a Tool, Not a Trophy

We decide what gets built next.



This is not the past. This is the structure still running.



By recognising the blueprints of the Extreme Centre, we gain the civic and intellectual tools required to dismantle authoritarianism before the architecture is complete.